

Fire Detection and
Extinguishing Control Panels
Series BC08



The versatile compact control panels
in conventional technology

FIRE DETECTION AND EXTINGUISHING CONTROL PANEL

Fire is a permanent threat to life and property. Therefore, immediate response to a fire alarm is imperative. The main objective of a fire detection control panel is to alarm and to react in time and, consequently, save lives and protect property.

The compact control panel Series BC08 is available in several versions: as fire detection control panel for small fire detection systems or fire alarm systems, as pure extinguishing control panel for extinguishing systems with one flooding zone, or as combined fire/extinguishing control panel. The basic version

already includes all functional units that are needed for the operation.

By selecting one of several typical factory settings, the commissioning of the control panel can be carried out in a particularly easy and time-saving way, even without using a PC. At the same time, the control panel offers a high level of flexibility and many upgrade options. The numerous integrated functions, a compact construction and the pleasing design allow versatile use of the product.



Typical applications

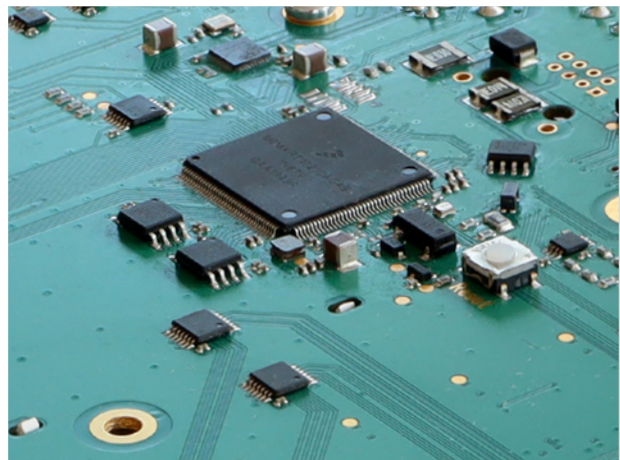
- Kindergärten and schools
- Restaurants and small hotels
- Equipment rooms and containers



State-of-the-art technology

The development of the Control Panel Series BC08 is based on more than 50 years of experience in building safety technology.

Electronics based on the most modern technologies and a compact mechanical construction provide many possible applications and at the same time offer a high degree of reliability.



Certified quality

The control panel is completely manufactured at the Labor Strauss headquarters in Vienna. Highly skilled employees, stringent test methods and a mature quality management system form the basis for high-grade products – 100% quality from Austria.

The Fire Detection and Extinguishing Control Panels Series BC08 have been tested and certified, as required by the Construction Products Regulation CPR, according to the standards EN 54-2, EN 54-4 and EN 12094-1, and according to VdS guidelines.



An overview of the most important facts

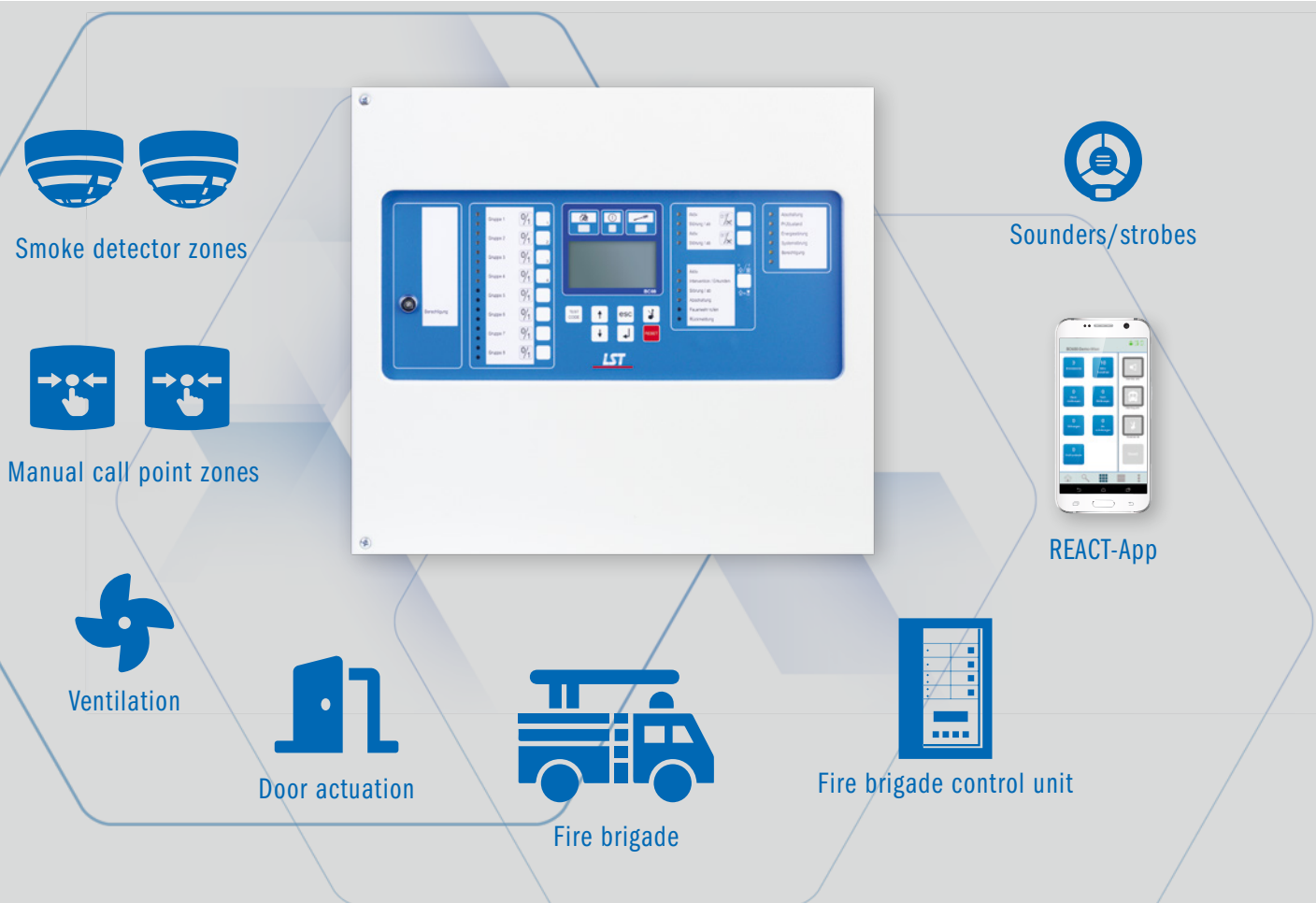
- Up to 8 detector lines and 4 monitored outputs as well as additional inputs and outputs for typical monitoring and control tasks
- Monitored power unit for optimum charging of the stand-by batteries and thus fail-safe operation
- Self-explanatory menu navigation and clear event indication for easy handling of the entire system
- Switchable menu language for flexible use in multilingual work environment
- Directly assigned buttons and LED displays for event indication and operation of important system parts
- Easy commissioning through selectable factory settings, optional adaptation by means of PC software
- Optional remote access with the REACT APP from a mobile phone, tablet or PC – for event indication and operation via the Internet

FIRE DETECTION SYSTEMS AND FIRE ALARM SYSTEMS

The standard versions of the Control Panel Series BC08 have been designed for use in small fire detection systems. Up to 8 detector lines in conventional technology allow connection of automatic fire detectors, manual call points, special detectors or fault detection contacts.

The detector lines for the actuation of sounders, strobes, fire dampers, ventilation systems or door ac-

tuations can be freely parameterised, which provides a high degree of flexibility. The interfaces to compatible system devices such as fire brigade control unit, key safe or remote tableau supplement the extensive range of features of the control panel. In addition, other devices of the building, such as heating, cooling or lifting systems, can be linked to the control panels for the indication of events.



Fire alarm systems

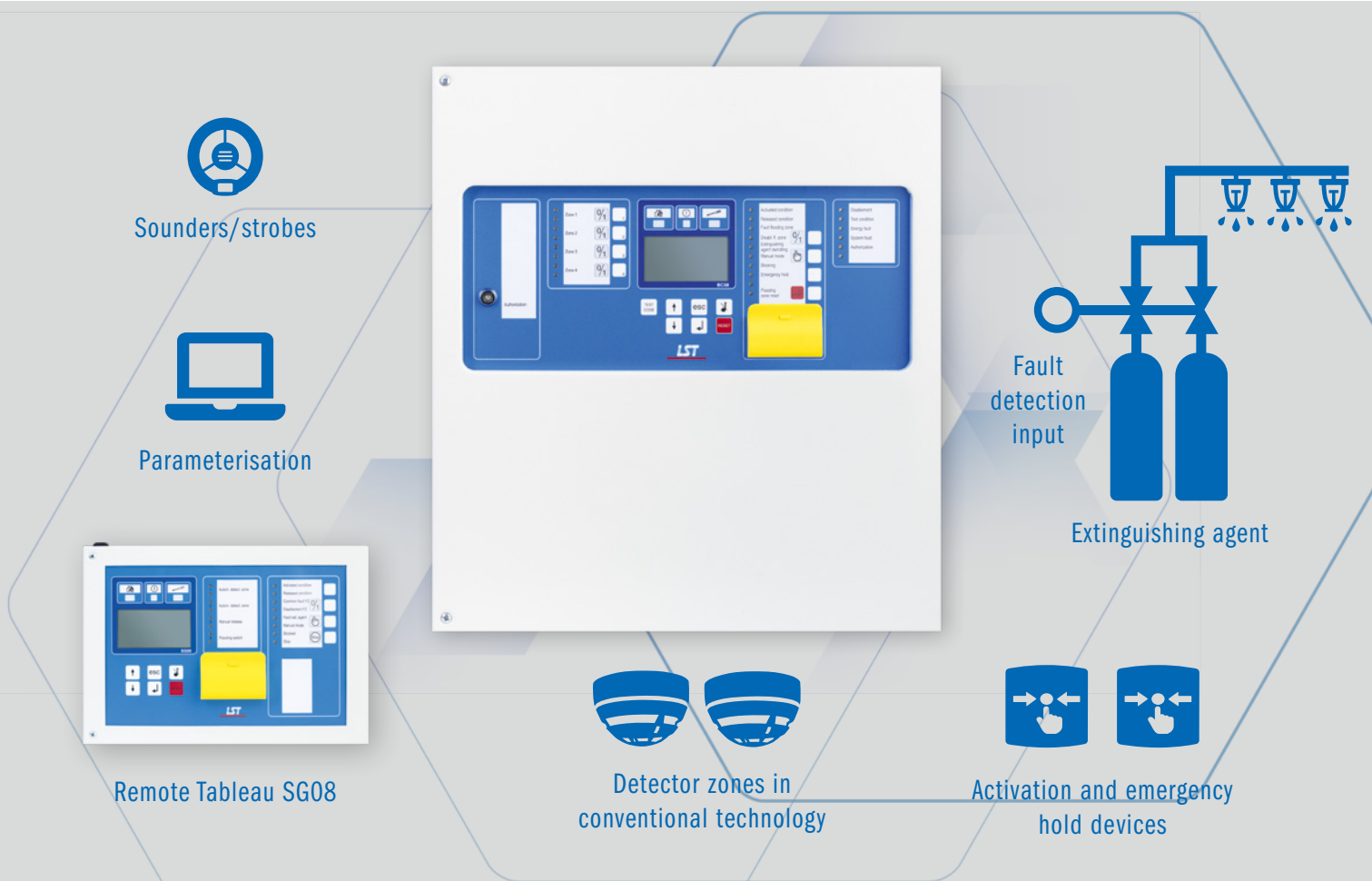
In certain special buildings – for example schools, kindergärten and small hotels – a fire detection system is not required according to the building regulations. Instead a fire alarm system may be required by building law – in Germany according to DIN VDE V 0826-2, in Austria according to TRVB 122. The Fire Detection Control Panel Series BC08 is ideally suited for fire alarm systems. The system is constructed using selected components of the professional fire alarm technology, which have been tested and certified according to the EN 54 series of standards.

EXTINGUISHING SYSTEMS FOR ANY EXTINGUISHING AGENT

The extended versions of the Control Panel Series BC08 provide the complete functionality for monitoring and actuating one flooding zone. The extinguishing control fulfils all mandatory functions and many options of the standard EN 12094 1.

Numerous inputs and outputs are prepared for direct connection of manual call points, fault detector and disable devices, flooding switches, solenoid valves

and signalling devices. The operating field is provided with light emitting diodes which indicate the system conditions, and buttons for the operation of the extinguishing system. Parameters which can be individually set allow the control panels to be optimally adapted to the system and the extinguishing medium. In this way, a Control Panel Series BC08 can be used to create a complete and cost-effective extinguishing control system with only a few additional components.



The control panel variants with integrated extinguishing control are designed as combined fire/extinguishing control panel. However, if necessary, they can also be used as pure extinguishing control panel. In this case, the automatic fire detection is accomplished through an external fire detection control panel from any manufacturer. All Control Panels Series BC08 can be used for monitoring a sprinkler system.

Thanks to the flexible parameter setup possibilities, extinguishing systems with gaseous or liquid extinguishing agents as well as aerosol extinguishing systems can be actuated. The control panels have been tested by VdS according to EN 12094-1 and EN 54. In addition, some variants have a VdS approval.

OPERATION AND PARAMETERISATION

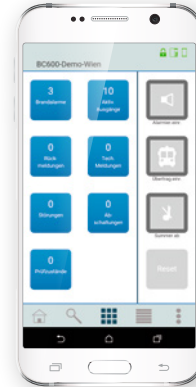


Display and operating field

The Fire/Extinguishing Control Panel Series BC08 ensures simple and clear user guidance. The 4-line event display immediately gives an overview in every situation and allows targeted reaction in the event of danger. Thanks to the menu-driven operation, system parts can be disabled, activated or reset by pressing only a few buttons. The menu language can be switched during operation and allows use in a multilingual environment. For the most important operating conditions and system parts there are status LEDs and operating buttons. To keep the operation of the control panel simple, it is also possible to assign LED displays and buttons directly to the detector lines.

Remote access APP REACT

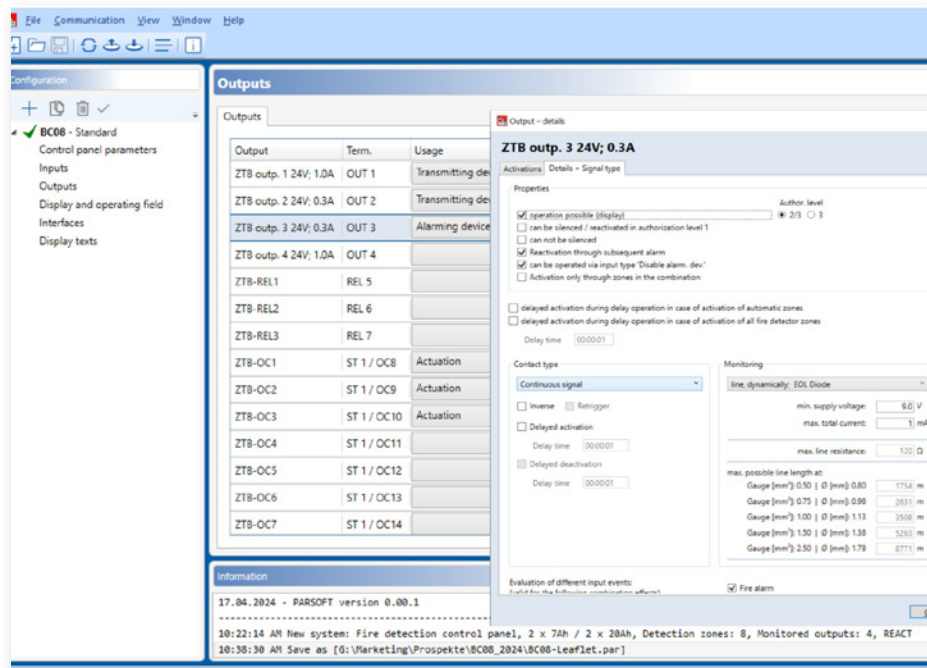
The „REmote ACcess Tool“ allows remote access to the control panel versions „PLUS“ via the Internet. It can be used to display control panel events on a mobile phone, tablet or PC, and to operate system parts.



Easy commissioning

Thanks to several practical factory settings, the Fire/Extinguishing Control Panels Series BC08 can be commissioned very quickly, even without additional tools.

The parameters are individually adapted to the system configuration by means of the PC software PARISOFT. The clear and intuitive user interface allows all parameters to be set and to be loaded into the control panel, and also allows a setup to be read out from the control panel.



CONTROL PANEL VARIANTS SERIES BC08

The control panel family BC08 consists of several versions for a variety of requirements and applications. The control panels can be classified according to the following features:

➤ **Control panel type:**

The BC08 is available as fire detection control panel for small fire detection systems and fire alarm systems, as combined fire/extinguishing control panel for extinguishing systems with one flooding zone, and as pure extinguishing control panel.

➤ **Conventional detector lines:**

There is one control panel version with 4 detector lines, all other versions offer 8 detector lines.

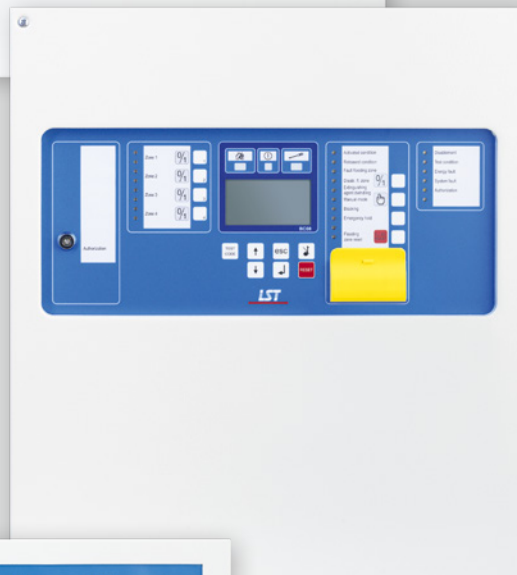
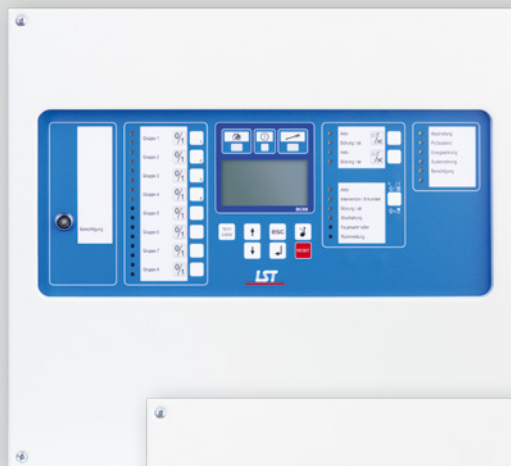
➤ **Cabinet size:**

The control panel variants in the small wall-mount cabinet are designed for stand-by batteries with up to 7 Ah. The control panels in the large wall-mount cabinet can accommodate batteries with up to 22 Ah.

➤ **Certification:**

The control panels have been tested and certified according to EN 54-2 and EN 54-4, the variants with integrated extinguishing control have additionally been tested and certified according to EN 12094-1. Furthermore, the control panel versions „PLUS“ have also been tested according to the VdS guidelines 2540, 2541 and/or 3844 and have been approved by VdS.

Fire Detection Control Panel BC08-8S-PLUS



Fire/Extinguishing
Control Panel
BC08-8L-EXT

Remote Tableau SG08

Variety of types:

- ◆ BC08-4S
- ◆ BC08-8S
- ◆ BC08-8S-PLUS
- ◆ BC08-8L-PLUS
- ◆ BC08-8S-EXT
- ◆ BC08-8L-EXT
- ◆ BC08-8L-EXT-PLUS

Type code:

BC08-8L-EXT-PLUS

4 detector lines 4
8 detector lines 8

small wall-mount cabinet S
large wall-mount cabinet L

no data provided fire detection control panel
EXT combined fire/extinguishing control panel
EST pure extinguishing control panel

no data provided only CPR certificate
PLUS VdS approval

The logo for LST, consisting of the letters 'LST' in a bold, blue, sans-serif font with horizontal lines through the letters, positioned above a thick red horizontal bar.The logo for MEP, consisting of the letters 'MEP' in a bold, blue, sans-serif font with horizontal lines through the letters, positioned above a thick red horizontal bar.

LABOR STRAUSS Group of companies:

- LABOR STRAUSS Sicherungsanlagenbau GmbH
Wien - Graz - Innsbruck - Linz - Klagenfurt - Salzburg - Bregenz
- LABOR STRAUSS Sicherheitssysteme GmbH
Mönchengladbach
- LABOR STRAUSS Sicherheitssysteme Nord GmbH
Hamburg
- LABOR STRAUSS Sicherheitssysteme Süd GmbH
Augsburg
- MEP-Gefahrenmeldetechnik GmbH
Pockau-Lengefeld - Erfurt

