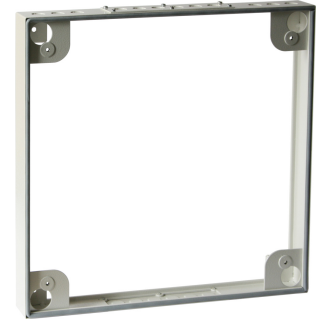


Surface Mounting Frame

AMR600-1

- > **Sealing to the wall**
- > **Protection against moisture**
- > **For BC600-1x or NTG624-1**



The mounting frame is made of powder coated sheet steel and allows a Fire Detection Control Panel BC600-1x to be mounted at a distance from the wall. Rubber seals on both sides ensure sealing to the wall and to the control panel, thereby protecting the control panel against ingress of moisture from the backside. The cables can be entered through knock-out openings from the top side and bottom side. Thanks to the concealed cable entry, the fire detection control panel can be installed in an optically pleasing way. The surface mounting frame can also be used for mounting a Power Supply Housing NTG624-1 at a distance from the wall.

TECHNICAL DATA

Material	powder-coated sheet steel 1 mm
RAL colour	grey white, RAL 9002
Dimensions W × H × D	384 × 384 × 43 mm
Weight	1.25 kg
Article number	211373
Order reference	Surface Mounting Frame AMR600-1

ACCESSORIES

Article number	Order reference
229651	Sealing Kit IP54 BC600-1x-DS